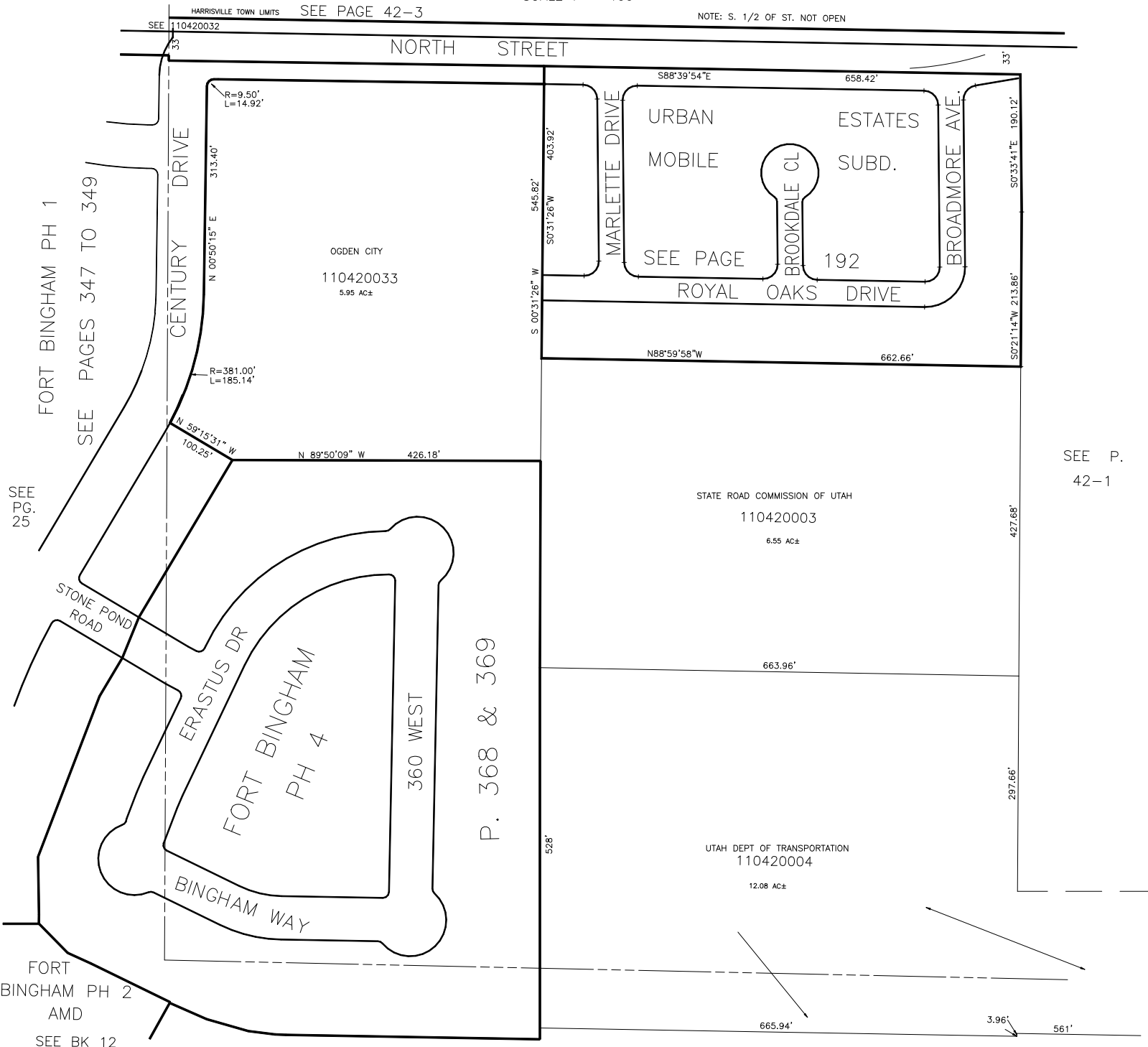


PART OF S.W. 1/4 OF  
SECTION 8, T.6N.,R.1., S.L.B.&M.

TAXING UNIT: 25

IN OGDEN CITY  
SCALE 1" = 100'

ALSO SEE PAGE 42-3



FORT BINGHAM PH 1  
SEE PAGES 347 TO 349

SEE PG. 25

FORT BINGHAM PH 2  
AMD  
SEE BK 12  
P. 213-215

HARRISVILLE TOWN LIMITS SEE PAGE 42-3

NOTE: S. 1/2 OF ST. NOT OPEN

SEE P. 42-1

SEE BOOK 12 PAGE 75-1